



Saint Luke's

South Hospital

Saint Luke's South Hospital
12300 Metcalf Ave., Overland Park, KS 66213

General Information: 913-317-7000

SaintLukesKC.org/South

DESTINATION	PARKING	ENTRY
Admitting	D E	1
Conference Rooms	D E	1
EMERGENCY	G	2
Goppert Breast Center	K	
Hospital (Main Entrance)	D E	1
Inpatient Rehabilitation	I	
Lab Draw Station	AB	4
Physician Offices	A B K	4
Outpatient Rehabilitation	H	3
Retail Pharmacy	AB	4
Southridge Medical Offices	K	



All Saint Luke's locations are tobacco-free

Campus Map



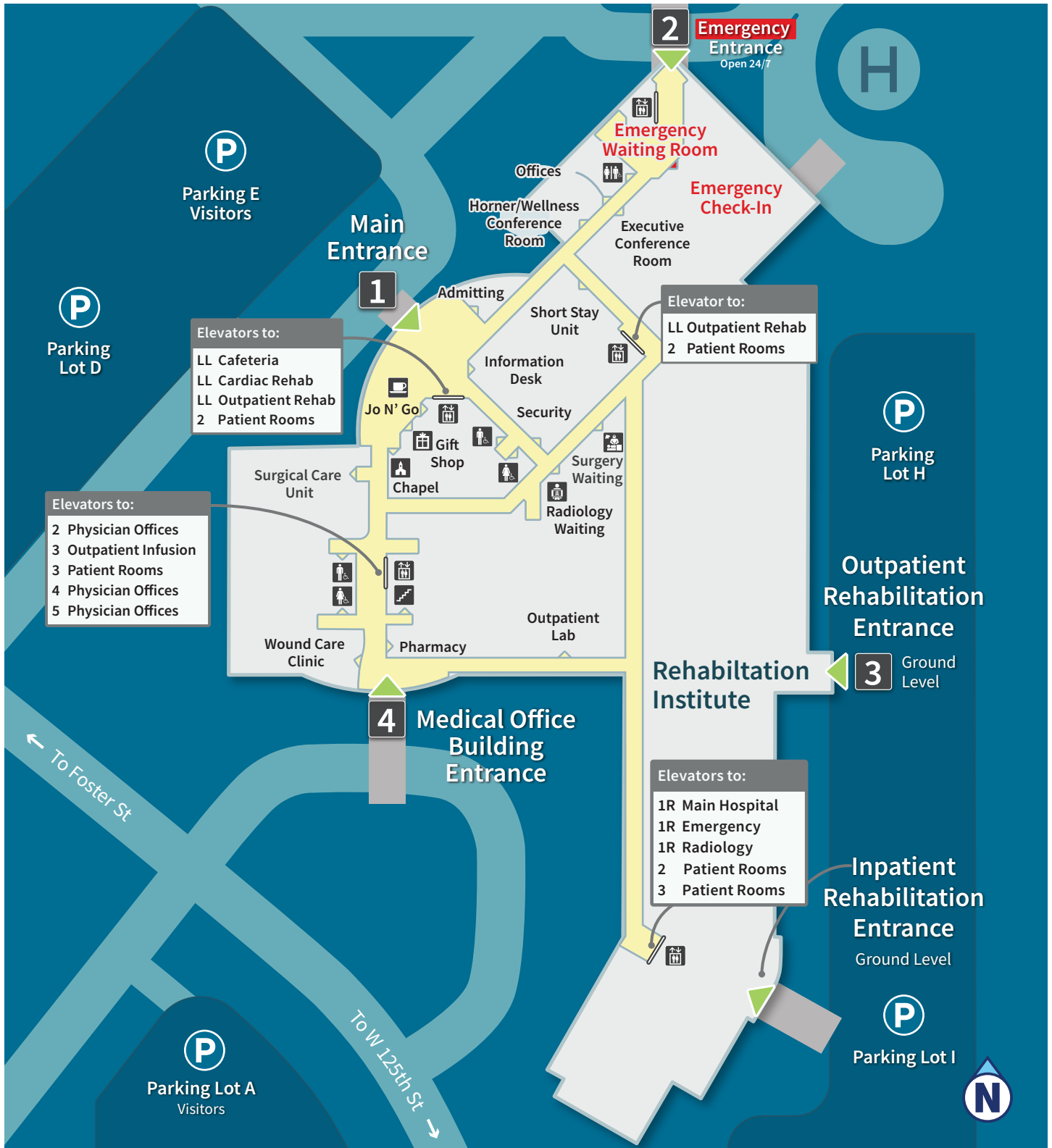
Saint Luke's

South Hospital

Saint Luke's South Hospital
12300 Metcalf Ave., Overland Park, KS 66213

General Information: 913-317-7000

SaintLukesKC.org/South



All Saint Luke's locations are tobacco-free

Interior