

Alternative Procedural Mask Assembly Directions

Before you begin:

- Select a workspace that is relatively free of dust. A garage or outdoors would not be recommended.
- We ask that before you handle the fabric you thoroughly wash your hands for 20 seconds.
- If more than one person will be making masks, volunteers should sit at least 6 feet apart.
- Clean and disinfect your working surface and tools – table, sewing machine, scissors, ruler, stapler, etc. – to help maintain a clean area in order to keep the finished product sterile.
 - If possible, use a hospital grade disinfectant wipe, making sure to allow the work surface to remain wet with the disinfectant for the required contact time listed on the product label.
- Clean hands again after cleaning and disinfection of work surfaces and tools is completed.

While making the masks, please try not to allow the surgical wrap or other materials fall to the floor.

Materials:

- NEW antimicrobial fabric or 2 ply sterilization wrap
- Scissors
- Stapler and staples
- Paper clips, metal ties, or pipe cleaners - Example [Aleko](#)
- Sewing machines (optional) - these need to be wiped down and sterilized prior to and then periodically after use

Directions:

1. Gather 2 ply heavy sterilization wrap, cut out:
 - one - 7" x 11" rectangle for the mask (Must be 2 ply)
 - two - 20" x ½" inch pieces of wrap for the ties (Ties can be 1 ply. When the fabric is cut the two layers come apart, therefore you will have a total of four pieces for the ties)
2. Fan fold the rectangle to make three pleats of ½" each. Leave 1" of material unfolded at the top and bottom to make it easier to attach the ties and the metal band/paper clip/pipe cleaner for the bridge of the nose.



For reference, in these images the blue is the outside of the mask.



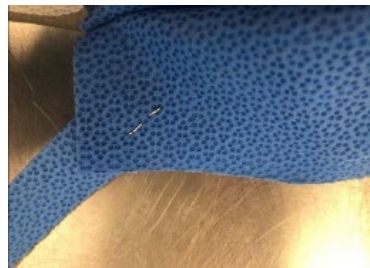
3. Sew/staple and secure ends on each side of the masks on the fan fold (if using staple the smooth side should be on the inside of the mask).
 - The end product should be approximately 4" high and 7.25" wide.
4. Cut a twist tie/pipe cleaner or straighten out a paper clip so it is approx. 4" long



5. Place in the area for the bridge of the nose to allow a method to help seal the bridge of the nose.



6. Fold sterilization wrap down over metal piece and tightly secure it by sewing or staples.
7. Secure top ties about an inch from the fan fold edge to allow a better fit. Secure bottom ties at the corner on a downward angle.



8. Please follow proper infection prevention guidelines when making the masks to prevent dust and contaminants from entering prior to use.
9. Store clean respirators in a nonporous, sturdy, airtight container – like a “Ziplock” plastic bag.